



# Champlain Valley Quilters Guild

## March 2021



### PRESIDENT'S MESSAGE

March. The month when the light returns in earnest. Even in the locked down dark months, our guild has been so active, and we see each others' faces frequently. I am so thrilled that we can do that. Our guild is 91 members strong, we usually see about 50 of us at guild meetings, 18 folks showed up for the last sew in, and the workshops are attracting 9-12 attendees. Let's keep the momentum going, and I will keep my eyes on the date when we can meet in person again.

Gyleen Fitzgerald will brighten our screens on March 2. Her lectures are always fun and incredibly inspiring. I hope to see you there.

*~ Anne Standish, President*

### NEXT MEETING MARCH 2—SIGN IN AT 6:30, MEETING BEGINS AT 7:00 PM ON ZOOM!



**Gyleen Fitzgerald**

Step outside the 'square' to evaluate the mechanics of Pyramid, Diamond, Kite and Hexagon quilts. The look can be contemporary or modern with just the right twist.

Gyleen infuses engineering tools and innovative techniques to simplify visually

complex quilts. She is known for Trash to Treasure Pineapple Quilts and the creation of the Pineapple Tool.

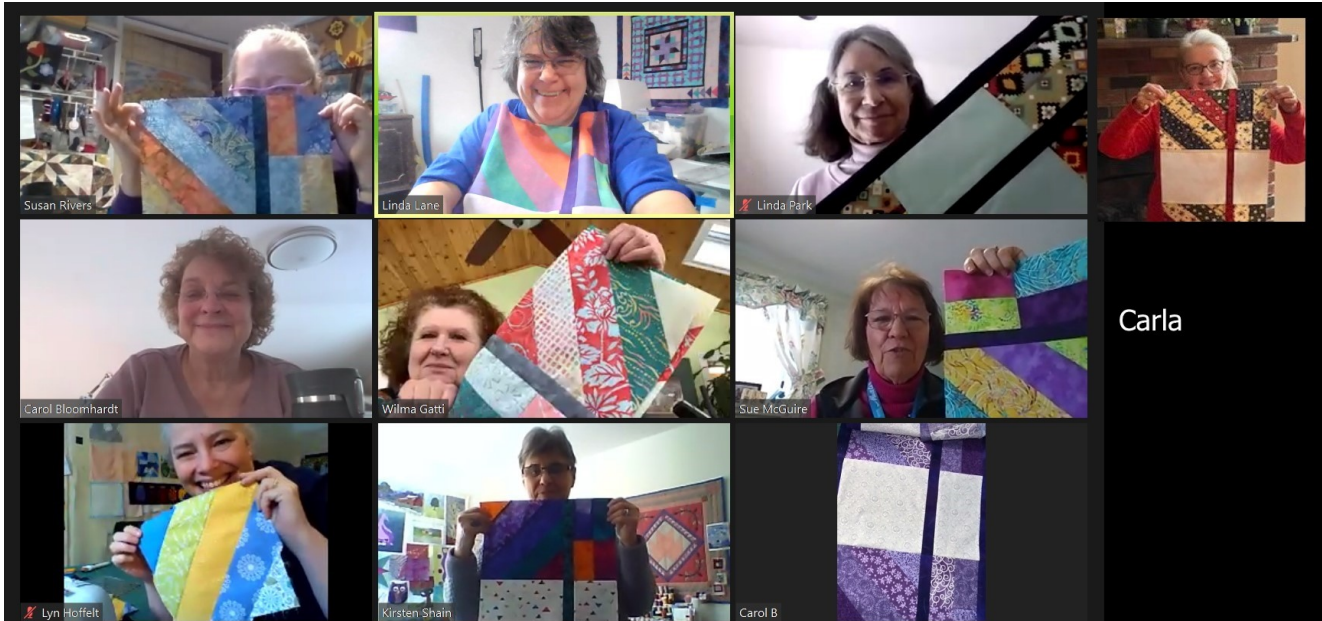
Gyleen is a Philadelphia native who spent formative years in Taiwan and Japan.

Note we have chosen not to have a Guild virtual workshop with Gyleen because she offers many on line courses you can sign up for individually, giving students more options for topics and schedule. Gyleen will discuss them at our meeting.

Here are some examples of quilts by Barbara Newman using Gyleen's Polygon techniques --



## Carol Bloomhart and the January Saturday Mystery Class—way too much fun was had by all!



## COMMUNITY QUILTS

Howdy Ladies. After a full year of Do-What-You-Want Sew Ins we decided it might be fun to do a more goal-oriented one. **The April 26th at 6:30pm Sew In** will therefore be dedicated to making pillowcases for donation. Marti and Joann have generously offered to cut up kits of our juvenile fabric which will be at Yankee Pride for distribution (first come, first serve) but you are welcome to use your own stash, juvenile fabric or other. We also encourage you to make as many as you'd like before the Sew In and when all are sewed and done please drop them off at Yankee Pride. Please e-mail [noel.patoine@gmail.com](mailto:noel.patoine@gmail.com) the number of pillowcases you've made and your name and I will enter you in the American Patchwork and Quilting counter so we get national credit for our locally donated good deeds. Below are links for suggested pillowcase patterns. Happy sewing, see you in Zoom-land soon.



**1,000,000 pillowcase challenge**

Check out these pillowcase tutorials for inspiration and directions:

<https://youtu.be/TAomYjHzUQk>

[https://media.rainpos.com/5968/burrito\\_pillowcase.pdf](https://media.rainpos.com/5968/burrito_pillowcase.pdf)

~ Noel Patoine, *Community Quilts*

**SILK TIES QUILT**—I am making a quilt using silk ties. I needed more silk for a border but didn't know what type to buy. I contacted Dharma Trading and got this answer:

"First, Silk Charmeuse...this silk has a very smooth, satin weave on one side and a crepe weave on the other (the satin weave is generally considered the 'outside' of the fabric). The weight used most often is about 19mm (momme). Another fabric used for silk ties is Habotai. Habotai is a smooth woven silk with both sides equal to each other in weave. A good weight for silk ties is 10mm to 16mm."



Momme (pronounced "mommy") is the weight in lbs. for a piece of silk 100 yds. long and 45" wide. The higher the momme, the more thread density of the silk weave.

Now the long wait for the 1/2 yd. of silk I ordered from China!

*Pat Hechmer*

---

## **CHAMPLAIN VALLEY QUILT GUILD OF VERMONT**

February 2, 2021 meeting minutes

6:30 PM Via Zoom

Half hour of socializing

6:56 PM: Anne Standish, President called to order and welcomed everyone

-asked if anyone had any Quest and Connect questions

-Anne asked if anyone had any suggestions about how to protect a quilt that cannot avoid the sunshine.

There were several suggestions: there is a spray that Susie Monday says she has used with good results; Joanne Lattrell suggested a film that she has used that goes on the window to stop harmful rays

-we had about 50 people at the meeting!

Sue McGuire introduced our speaker, Susie Monday from Pike Creek, Texas. She based her talk on the Sensory Alphabet. She referenced a book "Using Your Senses to Find Your Artist's Path, the Sensory Alphabet". She asked to us to concentrate on what we pay attention to: color, line, shape, light, sound, movement, space, texture, rhythm

8:06 PM Business Meeting

**WE NEED A VICE PRESIDENT FOR NEXT YEAR'S SLATE OF OFFICERS:** everyone please consider taking on this important role

**Programs: Sue McGuire, Lois Nial**

-March: Gyleen Fitzgerald

-April: Jane Dunnewold: this will be a two-hour presentation so there will not be a business meeting or show and tell

**Community Quilts:** Noel Patoine

-monthly sew-ins are on the 4<sup>th</sup> Monday evening of the month. There were 18 people at the January sew-in

-Noel put out the information she received from Rita Bortz regarding the size of the quilts needed for the different organizations we support

-Noel reported that there is a new organization that needs quilts. It is called Sleep in Heavenly Peace and they need twin size

**Membership: Catherine Symchych and Linda Park**

-Catherine reported that we had one returning member this month. We are at 91 members and the membership team thanked the program team for our success by having such good programs

Other

-Sarah Page made us aware of a 3x a week sit and sew with Mark Lipinski; check Facebook for information

Adjourned 8:13 PM

Show and Tell

Respectfully Submitted by Joann Frymire



## VICE PRESIDENT'S MESSAGE

It's that time of year the board members assess who's staying on and who's moving on for 2021-22 guild year. As you likely know I'll be president next year and yes we're looking for a VP. I'm starting by personal invitations. No bites as of this message, so you haven't missed your opportunity yet. Reach out to me or Anne with any questions.

Truthfully the bulk of the work is well in hand by terrific group of board members staying on.

We're also looking for a community quilt chair or two. Noel Patoine has done a stellar effort. As she leaves we need to fill that position. Again there are support folks willing to do some aspects, but not lead. Noel would be able to field those questions.

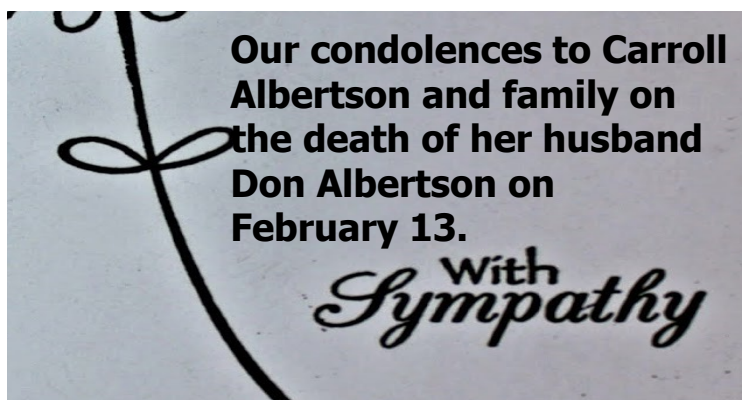
I'd like to gently remind you that we gave you a bit of a pass last year. Eleven months ago the shell shock of pandemic implications made all but one of the board members feel we couldn't ask for a change over. It didn't seem fair. Now this many months later many members have done more than they likely expected and need a break. Burn out is real even in an organization dedicated to passions we love. So join us please. Suggestions welcome. And of course the board meetings will be on Zoom. If I have my way, for ever.

Be home

Be well

*Claire Graham-Smith VP*

Editor's note: president and vice president are 3-year commitments; the first year you are vice-president, then president, then one final year as past-president. Unless we have a pandemic, of course...



# TREASURER'S REPORT FEBRUARY 2021

Eight months into fiscal year 2021, the Board is building next year's budget. **Committee Chairs should submit income/expense projections to the Treasurer by mid-March.** Year to date, the Board has prudently managed a profit of \$3,364 as opposed to a negative projected budget. This success is due to these factors: Despite fundraising lost opportunities, member dues and generous member contributions have offset the projected deficit. Recognizing long-term pandemic lockdown, the Board decided to drastically cut back expenditure such as pausing liability insurance and hall/venue rentals. Zoom programs have been successful reducing speakers' travel/hotel/meals expenses. Remote workshop income is below projected income, yet vibrant. Storage Unit remains a fixed expense. Zooming seems to be here for many more months. The Guild welcomes continued contributions until members can gather to resume Quilt Raffle and Quilt Show fundraising efforts. Covid-19 vaccines are slowly becoming available. Until we gather again, stay safe.



~Christine Wrobel, Treasurer

| <b>Champlain Valley Quilt Guild</b>        |                  |                  |                  |                |                  |                  |
|--|------------------|------------------|------------------|----------------|------------------|------------------|
| <b>Profit &amp; Loss Budget vs. Actual</b> |                  |                  |                  |                |                  |                  |
| July 2020 through January 2021             |                  |                  |                  |                |                  |                  |
|  | General          |                  | Quilt show       |                | TOTAL            |                  |
|  | Jul '20 - Jan 21 | Budget           | Jul '20 - Jan 21 | Budget         | Jul '20 - Jan 21 | Budget           |
| <b>Income</b>                              |                  |                  |                  |                |                  |                  |
| Contributions - General                    | 1,986.20         | 50.00            | 40.00            |                | 2,026.20         | 50.00            |
| Contributions -Community Quilts            | 0.00             | 55.00            | 0.00             |                | 0.00             | 55.00            |
| Guest Fees                                 | 229.34           | 50.00            | 0.00             |                | 229.34           | 50.00            |
| Interest income                            | 104.97           | 100.00           | 0.00             |                | 104.97           | 100.00           |
| Membership Dues                            | 3,204.44         | 3,500.00         | 0.00             |                | 3,204.44         | 3,500.00         |
| Quilts of Valor Raffle                     | 0.00             | 55.00            | 0.00             |                | 0.00             | 55.00            |
| Raffle Quilt                               | 0.00             | 2,000.00         | 0.00             |                | 0.00             | 2,000.00         |
| Teacup Auction                             | 0.00             | 400.00           | 0.00             |                | 0.00             | 400.00           |
| Workshops                                  | 399.27           | 1,500.00         | 0.00             |                | 399.27           | 1,500.00         |
| <b>Total Income</b>                        | <b>5,924.22</b>  | <b>7,710.00</b>  | <b>40.00</b>     |                | <b>5,964.22</b>  | <b>7,710.00</b>  |
| <b>Expense</b>                             |                  |                  |                  |                |                  |                  |
| Community Quilts Expense                   | 0.00             | 200.00           | 0.00             |                | 0.00             | 200.00           |
| Donations - VQF, NEQM, GMQG                | 35.00            | 85.00            | 0.00             |                | 35.00            | 85.00            |
| Hall/Venue Rentals                         | 0.00             | 1,575.00         | 0.00             |                | 0.00             | 1,575.00         |
| Insurance                                  | 0.00             | 610.00           | 0.00             |                | 0.00             | 610.00           |
| Library                                    | 0.00             | 50.00            | 0.00             |                | 0.00             | 50.00            |
| Membership Expense                         | 0.00             | 50.00            | 0.00             |                | 0.00             | 50.00            |
| Programs                                   | 1,300.00         | 5,000.00         | 0.00             |                | 1,300.00         | 5,000.00         |
| Storage Unit - 1/3 Comm. Quilts            | 255.00           | 340.00           | 0.00             |                | 255.00           | 340.00           |
| Storage Unit - 2/3 Quilt Show              | 0.00             |                  | 510.00           | 680.00         | 510.00           | 680.00           |
| Workshop Expense                           | 500.00           | 1,500.00         | 0.00             |                | 500.00           | 1,500.00         |
| <b>Total Expense</b>                       | <b>2,090.00</b>  | <b>9,410.00</b>  | <b>510.00</b>    | <b>680.00</b>  | <b>2,600.00</b>  | <b>10,090.00</b> |
| <b>Net Income</b>                          | <b>3,834.22</b>  | <b>-1,700.00</b> | <b>-470.00</b>   | <b>-680.00</b> | <b>3,364.22</b>  | <b>-2,380.00</b> |

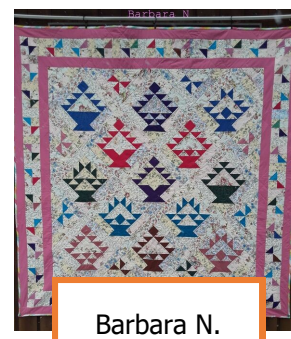
Some Show and Tell from February 2021—send your pictures to Marti, [cvqginfo@cvqgv.org](mailto:cvqginfo@cvqgv.org)



Catherine's miniature bookshop



Linda P.



Barbara N.

## UPCOMING PROGRAMS



**APRIL 6** We are in for a treat! Jane Dunnewold will present her lecture *The Elegant Choice*. As Jane describes the talk, "Each of us has available myriad choices of materials and techniques. How to navigate the waters of choice and decision? This entertaining lecture on the elements of contrast and relationship sorts out the variables and provides strategies for making wise choices based on these seven elements: color, value, shape, size, texture, stylization and thematic interaction. Luscious visuals drive the lessons home!"



NOTE --

This will be a 2 hour event; with a one hour recorded lecture and a second hour for questions and discussion with Jane. This is sure to be a presentation you will not want to miss! Sign in to Zoom at 6:15 and the lecture will begin at 6:30. Non-members may sign up and pay on our website, [www.cvqgvt.org](http://www.cvqgvt.org) by Monday, April 5. Due to the longer lecture time, we will not hold a business meeting and may not have show and tell. [www.janedunnewold.com/](http://www.janedunnewold.com/)

**MAY 4** - Allison Wilber will again be our speaker with 'Fabulous Fabric Selection'. She describes her quilting as painting with thread and fabric, combining traditional quilting with contemporary techniques. Her work celebrates the rich feminine tradition of stitching as a means of personal expression. She will also offer a Workshop 'Color in Quilting', the day after the Guild meeting. [www.allisonwilburquilts.com](http://www.allisonwilburquilts.com)



c/o Susan Rivers  
237 Shelburne Street  
Burlington, VT 05401

